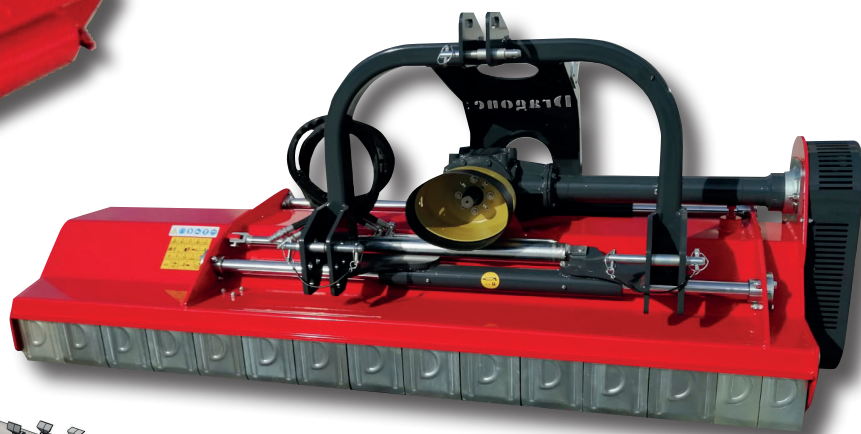
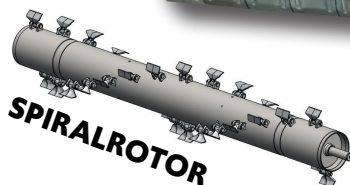
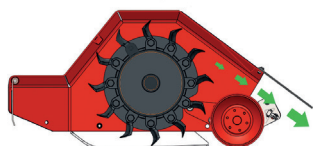


IMPIEGO: erba – mais – arbusti – paglia – nocciolo – vigneto

USE: grass - corn - shrubs - straw - hazel - vineyard

VERWENDUNG: Gras - Mais - Sträucher - Stroh - Haselnuss - Weinberg

UTILISATION: herbe - maïs - arbustes - paille - noisette - vigne

EMPLEO: hierba – maíz – arbustos – paja – avellanos - viñedo

 Scarico sopra al rullo
 Discharging above the roller

DESCRIZIONE: trinciatrice con struttura e trasmissione rinforzata indicata per terreni umidi, vigneti e frutteti.

DESCRIPTION: shredder with reinforced structure and transmission suitable for wet soils, vineyards and orchards.

BESCHREIBUNG: Mulcher mit verstärkter Struktur und Getriebe, geeignet für nasse Böden, Weinberge und Obstgärten.

DESCRIPTION: broyeur à structure et transmission renforcée adapté aux sols humides, vignes et vergers.

DESCRIPCIÓN: trinchadora con estructura y transmisión reforzada indicada para terrenos húmedos, viñedos y frutales.

A: versione fissa - fixed version - version fixe - feste Ausführung - versión fija

B: versione spostabile - swinging version - version déplaçable - verstellbare Ausführung - versión desplazable

Dati tecnici

Technical Data - Informations techniques - Technische Daten - Datos técnicos

 *peso indicativo
 *indicative weight

TYPE	 [mm]	 [mm]	 [mm]	 [Kg*]				 [Hp]	 ROTORE ROTOR [mm]	 RULLO ROLLER ø[mm]
VG1 24-120	1200	1300	300	365/432	10	20	3	35-60	159	159
VG1 24-140	1400	1500	400	395 / 462	12	24	4	40-70	159	159
VG1 24-150	1500	1630	400	422 / 492	14	28	4	45-75	159	159
VG1 24-160	1600	1730	450	452 / 530	14	28	4	45-75	159	159
VG1 24-175	1750	1880	500	480 / 560	16	32	5	50-80	159	159
VG1 24-200	2000	2130	500	550 / 625	18	36	5	60-90	159	200
VG1 24-220	2200	2330	500	625 / 705	20	40	5	70-100	194	200
VG1 24-240	2400	2530	500	695 / 770	22	44	5	80-120	194	200

EQUIPAGGIAMENTO STANDARD

STANDARD EQUIPMENT - STANDARD AUSRÜSTUNG - ÉQUIPEMENT STANDARD - EQUIPAMIENTO ESTÁNDAR

Paratia posteriore in gomma
Rear rubber bulkhead
Hinterer Gummischot
Cloison arrière en caoutchouc
Tabique trasero de goma



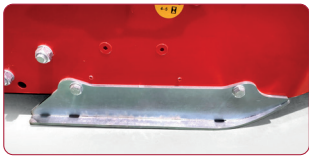
Fiancale destro arrotondato e privo di sporgenze
Rounded right side panel with no ledge
Abgerundete rechte Seitenwand ohne Vorsprünge
Panneau latéral droit arrondi sans saillies
Costado derecho redondeado y sin salientes



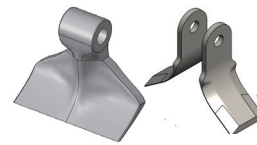
Protezioni antinfortunistiche
Accident prevention protections
Unfallverhütungsschutz
Protections de prévention des accidents
Protecciones contra accidentes



Slitte rinforzate
Reinforced slides
Verstärkte kufen
Patins renforcés
Correderas reforzadas



Bandelle in poliuretano
Polyurethane straps
Riemen aus Polyurethan
Sangles en polyuréthane
Correas de poliuretano



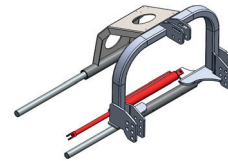
Coltelli o martelli
Knives or hammers
Messer oder Hämmer
Couteaux ou marteaux
Cuchillas o martillos



Contro-coltello stampato
Melted counter knife
Geformtes Gegenmesser
Contre-couteau
Contracuchilla conformada



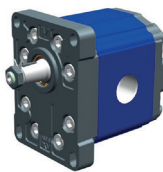
Rotore rinforzato
Reinforced rotor
Verstärkter Rotor
Rotor renforcé
Rotor reforzado



Spostamento idraulico
Hydraulic displacement
Hydraulische Verdrängung
Déplacement hydraulique
Desplazamiento hidráulico

OPTIONAL

Attacco frontale
(540-1000 rpm)
Front attachment
(540-1000 rpm)
Frontanbau
(540-1000 U/min)
Accessoire avant
(540-1000 tr/min)
Conexión delantera
(540-1000 rpm)



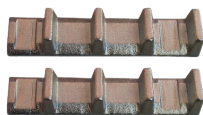
Kit Flangia azionamento
con motore idraulico
Drive flange kit
with hydraulic motor
Antriebsflanschsatz
mit Hydraulikmotor
Kit bride d'entraînement
avec moteur hydraulique
Kit Brida accionamiento
con motor hidráulico



Catene anteriori
con paratia in gomma
Front chains
with rubber bulkhead
Frontketten
mit gummischott
Chaînes avant avec
cloison en caoutchouc
Cadenas delanteras
con tabique de goma



Ventola raffreddamento
cinghie
Belt cooling fan
Riemenlüfter
Ventilateur de
refroidissement à courroie
Ventilador refrigeración
correas

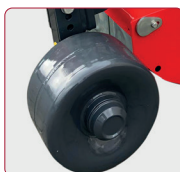


Doppio controcoltello stampato
Double melted counter knife
Doppelt geformtes Gegenmesser
Contre-couteau double
Doble contracuchilla conformada



Gruppo moltiplicatore al centro
Gear box group in the center
Multiplikatorgruppe in der mitte
Groupe multiplicateur au centre
Grupo multiplicador en el centro

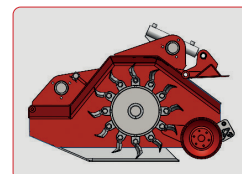
Attacco reversibile
Reversible connection
Reversible Verbindung
Connexion réversible
Conexión reversible



Ruote in ferro
Iron wheels
Eisenräder
Roues en fer
Ruedas de hierro



Raschia rullo rinforzato
Reinforced roller scraper
Verstärkter rollenschaber
Grattoir à rouleaux renforcé
Rascador rodillo reforzado



Cassone apribile idraulico
Hydraulic opening box
Hydraulisch öffnender Körper
Corps à ouverture hydraulique
Cuerpo de apertura hidráulica

